

## 2/54 Fig Tree Drive Goonellabah

### Table of Contents

- | [Property Details](#)
- | [Photo Gallery](#)
- | [Map](#)
- | [Contact For Inspection](#)

## Property Details

### 2/54 Fig Tree Drive, Goonellabah



#### 2 BED - DUPLEX UNIT

2  1  1 

Lowset 2 bedroom brick and tile unit with lock-up garage (with remote). Both bedrooms have built-in robes and there is also a utility room or office.

Bathroom plus separate toilet.

Open plan (air-conditioning) lounge/dining area plus kitchen with dishwasher. Internal access to laundry/storage.

Tiled front patio, concrete patio on the side and back of unit. Able to purchase with vacant possession. Handy location to schools, university and bus past. Call Gerald on 0408 666899 to arrange inspection.

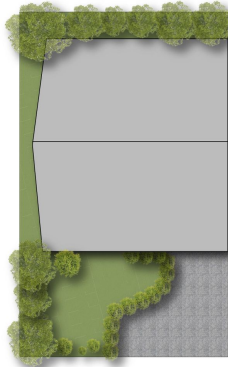
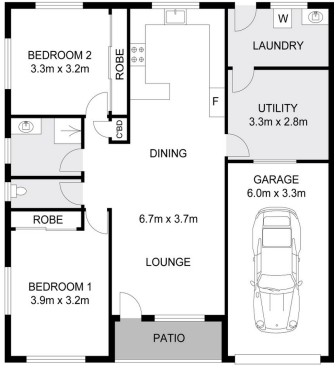
- 2 Bedrooms
- 1 Bathroom
- 1 Garage
- Remote Garage
- Built In Robes

**\$439,000**

## Photo Gallery







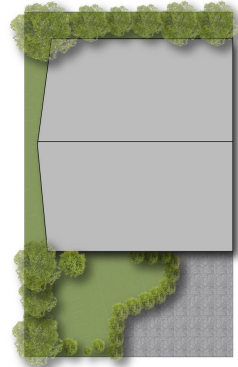
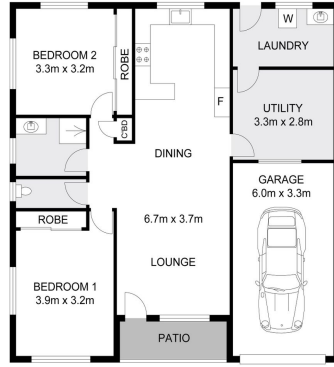
SITE PLAN

INT : 86.7m<sup>2</sup>  
 EXT : 4.1m<sup>2</sup>  
 GARAGE : 19.8m<sup>2</sup>



**2/54 Fig Tree Drive, Goonellabah**

Dimensions are approximate. All information contained herein gathered from sources we believe to be reliable. However we cannot guarantee its accuracy and interested persons should rely on their own enquiries. © visionmedia vision 2024.



SITE PLAN

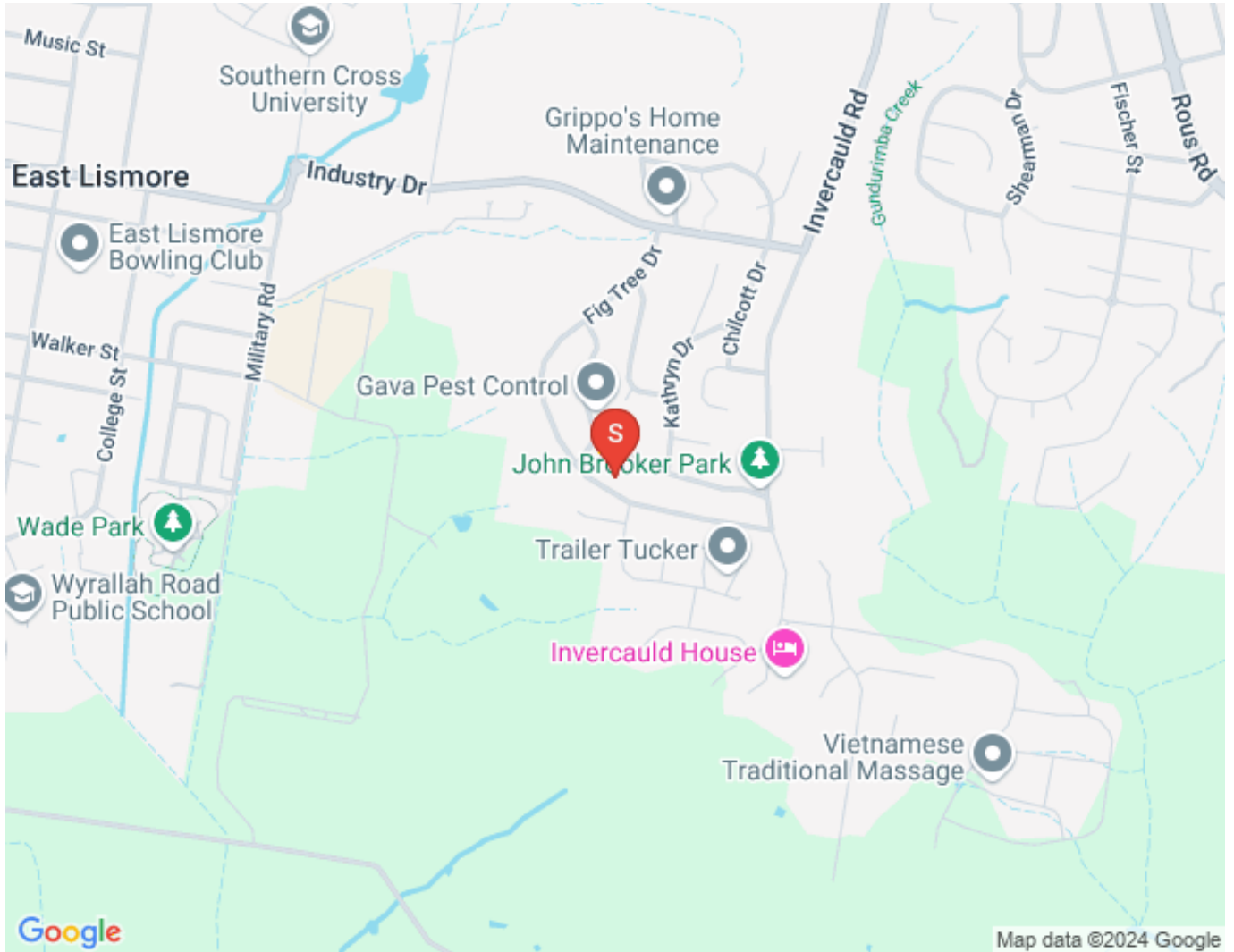
INT : 86.7m<sup>2</sup>  
 EXT : 4.1m<sup>2</sup>  
 GARAGE : 19.8m<sup>2</sup>



**2/54 Fig Tree Drive, Goonellabah**

Dimensions are approximate. All information contained herein gathered from sources we believe to be reliable. However we cannot guarantee its accuracy and interested persons should rely on their own enquiries. © visionmedia vision 2024.

## Map



## Contact For Inspection



### **GERALD POLLARD**

LICENSED REAL ESTATE AGENT

---

0408 666 899

[gerald@walmurray.com.au](mailto:gerald@walmurray.com.au)